

# 12 Different Types of Simple Blouse Sleeve Designs

In the world of fashion, it's often the little details that make the most significant impact. And when it comes to ethnic wear, blouse sleeve designs are a canvas for creativity. Join us on a captivating visual exploration as we showcase striking but simple blouse-sleeve designs that can transform your traditional attire into a work of art. Let the images do the talking and inspire your next stunning ensemble.

In case you are interested in knowing about all types of sleeves in dresses, then you can refer to this blog post: [29 Types of Sleeves in Dresses](#)

## #1 Simple Hand Embroidery Designs For Blouse Sleeves

For those who appreciate the artistry of hand embroidery, blouse sleeves offer a perfect canvas for intricate embellishments.



[BUY IT FROM MYNTRA](#)

Blouse sleeve hand embroidery designs can encompass various techniques, including zari work, sequin work, mirror work, beadwork, aari work, and more, allowing for an array of creative possibilities.



Simple

Hand Embroidery Designs for Blouse Sleeves

## #2 Machine Embroidery Designs for Blouse Sleeves

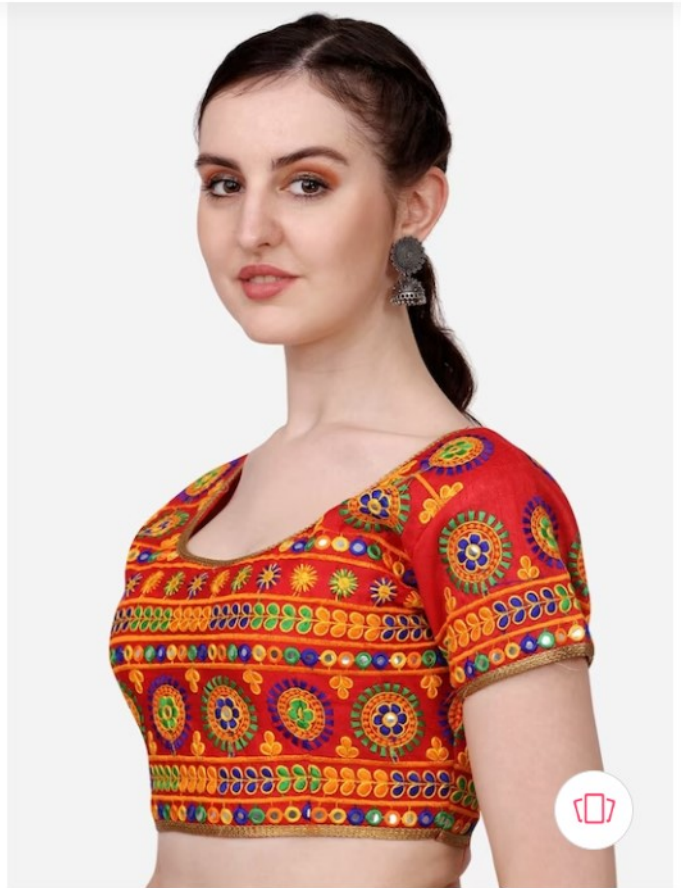
Witness the magic of machine embroidery and how it can effortlessly transform your blouse sleeves.



*Simple Machine Embroidery Blouse  
Sleeves*

Machine

Embroidery Designs for Blouse Sleeve





[BUY IT FROM MYNTRA](#)

### #3 Bell Sleeves Blouse Design

A bell sleeve blouse features a distinctive design with sleeves that widen towards the bottom, resembling a bell shape. These bell-sleeved blouse designs are a fashion statement, available in a variety of materials like cotton, linen, and silk.

Creating your own bell-sleeved blouse designs at home is a breeze. Cutting and sewing a bell-sleeve blouse is a straightforward DIY project. We've already posted a comprehensive step-by-step video guide on crafting a bell sleeve top. Stay tuned for upcoming tutorials on our YouTube channel, where we'll walk you through the process.

[BUY IT FROM MYNTRA](#)





[CLICK TO EXPLORE IN MYNTRA](#)

### #4 Three-quarter or 3 4 Sleeve Blouse Designs

As the name suggests, the sleeves of three-quarter sleeve blouse designs extend to approximately the midpoint between your elbow and wrist. This unique 3/4 sleeve blouse design strikes the perfect balance between the shorter elbow sleeves and the full-length sleeves, offering a versatile and stylish choice for your blouse designs. These sleeves provide more coverage than elbow sleeves while allowing your wrists to remain free, making them a practical and fashionable choice for various occasions.

The image below displays a fitted blouse with a three-quarter sleeve design, suitable for wearing as a Choli with Lehenga or pairing it elegantly with a saree.





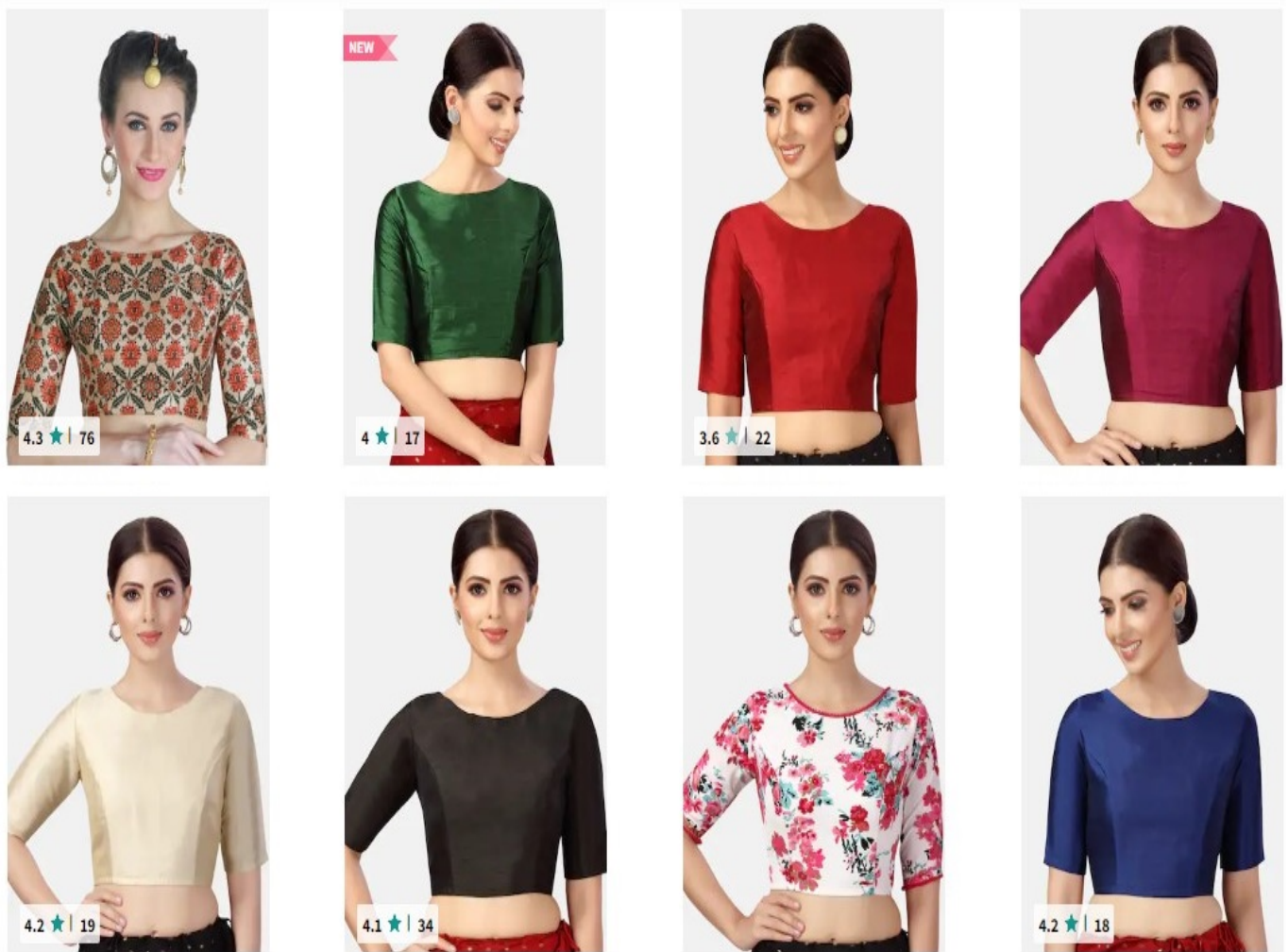


[Buy it from Myntra](#)

### #5 Simple Elbow Length Sleeve Blouse Designs

A fresh fashion wave has hit the market in the form of elegant elbow-length sleeve blouse designs. These stylish blouses feature sleeves that gracefully reach the elbow, creating a timeless, versatile look that's all the rage. Ideal for various occasions, these classic sleeves add a touch of sophistication to your attire, whether you're pairing them with sarees, lehengas, or skirts. Discover the allure of minimalistic charm with our exclusive collection of simple elbow-length sleeve blouse designs designed to elevate your ethnic wardrobe effortlessly.

[BUY IT FROM MYNTRA](#)



[Click to Explore Elbow Length Blouse From Myntra](#)

## #6 Half Sleeve-Puff Sleeve Blouse Designs

Half sleeves with a puff design are a delightful fusion of classic and contemporary styles. These sleeves feature a gathering at the shoulder and cuff, creating a subtle puff effect that adds a touch of femininity to your attire.

This unique sleeve design can vary from piece to piece, offering versatility in your wardrobe. Whether they are softly puffed or not, half-sleeve puff blouse designs are a captivating detail that can elevate your outfit.

Commonly found in dresses and blouses, these sleeves bring a hint of vintage charm to modern fashion. Styling puff sleeves can be a creative endeavour and is an attention-grabbing choice for your next garment.

Traditional puff sleeve gowns resemble sheer cones that gracefully envelop a woman's arms, resulting in elegant voluminous skirts. Sometimes referred to as elastic sleeves, they provide flexibility while maintaining a structured silhouette.

Puff sleeves can be crafted from various materials, including satin, taffeta, organza, sailcloth lace, and tulle, allowing you to explore different textures and styles. Embrace the uniqueness of half-sleeve puff blouse designs to infuse your wardrobe with a blend of timeless elegance and contemporary allure.



Half Puff Sleeve Blouse



LEELA FASHION WOMEN'S CLOTHING

Back-Open Blouse with Puff Sleeves



LEELA FASHION WOMEN'S CLOTHING

Back-Open Blouse with Puff Sleeves

[Buy from AJIO](#)

## #7 Balloon Sleeve Blouse Designs

The balloon sleeve is a distinctive sleeve style characterized by a snug fit at the shoulder and upper arm, followed by a graceful flare that begins at the elbow, creating a charming balloon-like silhouette. This enchanting sleeve design is a popular choice for dresses and blouses, offering a versatile option that effortlessly transitions between casual and formal occasions.

Design



[Women Pure Cotton Balloon-Sleeved Blouse from Myntra](#)

### #8 Cap Sleeve Blouse Design

A cap sleeve is a charming sleeve style that delicately drapes over the upper arm and shoulder, covering them while leaving a portion of the arm exposed. These sleeves are notably short and are often featured as part of a dress or blouse.

Cap sleeves exemplify the concept of a one-piece sleeve, where the same fabric used for the bodice extends to create the sleeve. This seamless design adds an elegant touch to your ensemble.

Cap sleeves are favoured by many women for their flattering qualities. They showcase the shoulders and upper arms gracefully, striking a perfect balance between showcasing these areas and maintaining a tasteful level of coverage.



[Click to Buy this from Myntra](#)

### #9 Lantern Sleeve Blouse Designs

The lantern sleeve blouse, while less likely to be paired with a saree, is a captivating sleeve style known for its distinctive silhouette. So this type of blouse is not a saree blouse. These can be termed blouse tops. These sleeves start wide at the bottom and gradually taper toward the top, creating a captivating lantern-like shape. This unique sleeve design is a statement-maker, often gracing elegant and formal dresses, making it an ideal choice for those seeking a standout fashion statement.

### #10 Butterfly Sleeve Blouse Designs

Resembling the exquisite wings of a butterfly, these sleeves typically start with a snug fit at the shoulder before gracefully flaring out at the elbow. Their unique design captures the essence of elegance and adds a touch of drama to your attire. Butterfly sleeves are your go-to option when you want to leave a lasting impression with your clothing choice.



[Click to Buy from AJIO](#)

Butterfly sleeve blouses can indeed be worn with sarees for a unique and stylish look. These dramatic sleeves add a touch of flair and elegance to your saree ensemble, making it a fashionable choice for special occasions or when you want to make a statement with your saree outfit. The key is to ensure that the butterfly sleeves complement the overall design and aesthetics of the saree, creating a harmonious and eye-catching ensemble.

### #11 Frill Sleeve Blouse Design

Frill sleeves are a charming sleeve style featuring delicate gathers at the shoulder that cascade into a series of ruffles, extending to the elbow, wrist, or sometimes just the upper arm. Frequently gracing dresses and blouses, this sleeve design is a favoured option for special occasions.

The versatility of frill sleeves allows them to complement a variety of outfits, adding a touch of elegance through layers of delicate ruffles. When paired thoughtfully, frill sleeve blouses can enhance the beauty of a saree ensemble, creating a distinctive and stylish look that's perfect for various events.

Frill Sleeves are also known as ruffle sleeves.

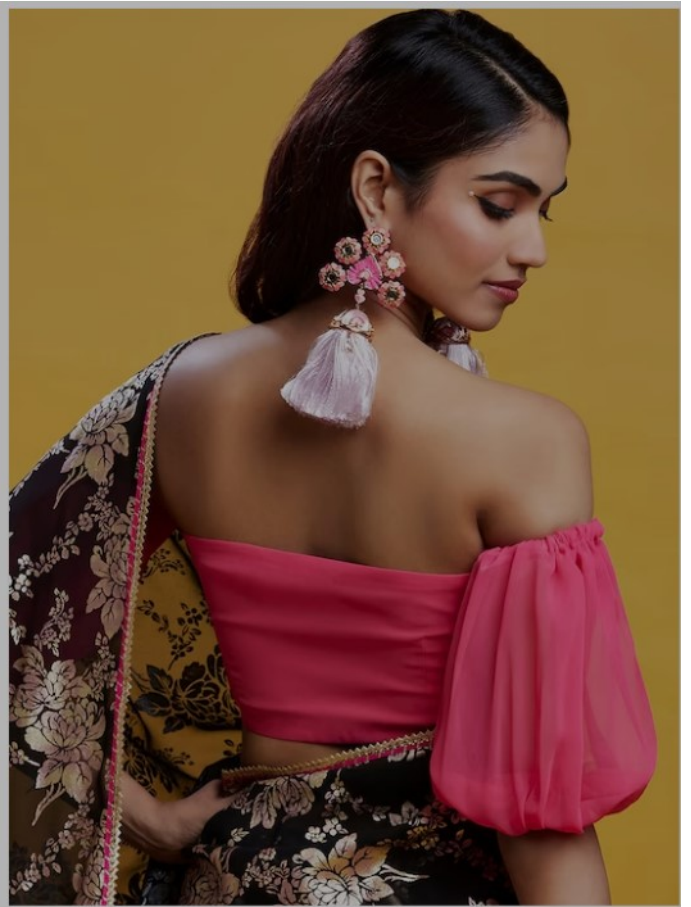
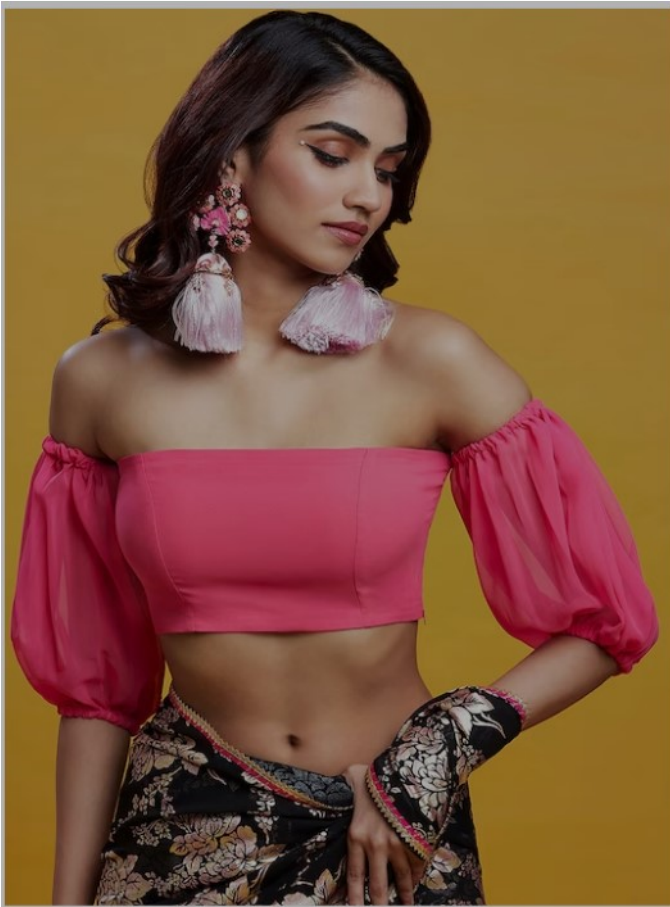


[Click to Buy from Myntra](#)

### #12 Off-shoulder Sleeve Blouse Design

The off-shoulder blouse has emerged as a recent and stunning trend in saree fashion. This alluring sleeve style elegantly exposes the shoulders, creating a fashionable statement. Typically achieved with a horizontal cut just below the neckline, it's a favoured choice for saree enthusiasts, especially during summer.

It's worth noting that while two-sided off-shoulder sleeves, where both shoulders are exposed, are the classic choice, one-sided off-shoulder sleeves have also gained popularity. However, one-sided off-shoulder style is more prevalent in women's tops, and two-sided styles can be seen in fashionable saree blouses.





Indya

Embellished Off-Shoulder Blouse with Zip Closure



Salwar studio

Off-Shoulder Slip-On Blouse

[Click to Explore in AJIO](#)

## Final Thoughts

Blouse sleeves are a powerful canvas for personal expression in the world of saree fashion. From the artistry of hand and machine embroidery to classic choices like a bell and 3/4 sleeves, each style adds a unique touch to your ensemble. While dramatic sleeves like butterfly sleeves can make a statement, elegant frill sleeves and the trendy off-shoulder blouse redefine traditional saree looks. Your choice of blouse sleeves lets you craft your fashion statement, making every saree outfit a masterpiece. So, embrace the variety, explore your creativity, and elevate your saree style with captivating blouse sleeves.

## Tailoring Certificate Courses

Tailoring Course	Duration	Admission Fee	Monthly Fee
<a href="#">Basic Tailoring Course</a>	6 Months	550/-	700/-
<a href="#">Diploma in Tailoring</a>	1 Year	900/-	1st Semester 700/- 2nd Semester 1000/-
<a href="#">Blouse Designing Course</a>	4 Months	1000/-	1200/-
<a href="#">Kurti Designing Course</a>	4 Months	1000/-	1200/-
<a href="#">Click to Buy from Myntra</a>	1 Year	2000/-	1st Semester 1000/- 2nd Semester 1600/-
<a href="#">Fashion Designing Course</a>			

[Click Here to Whatsapp](#)

[Click Here to CALL](#)